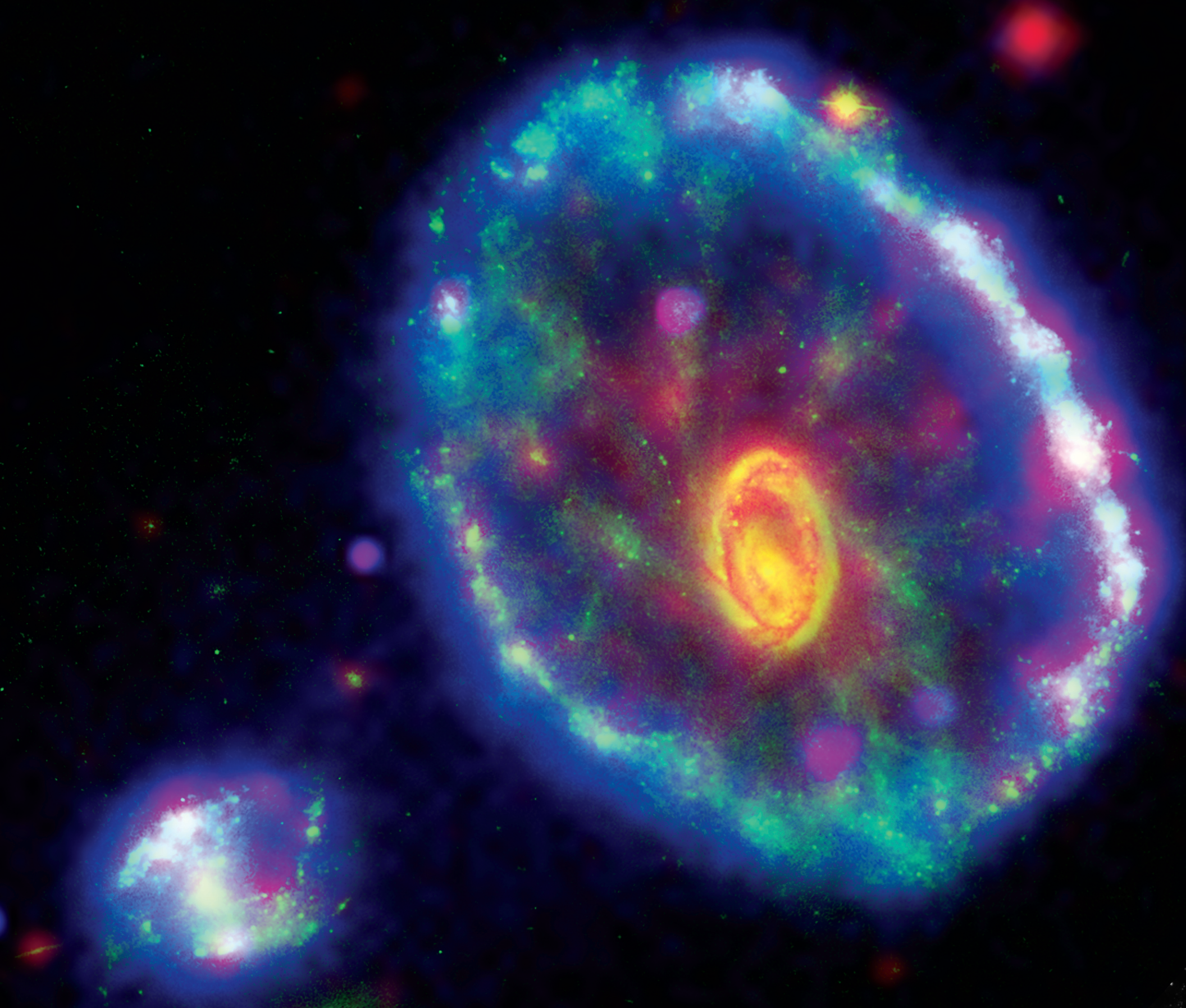


M 8 2

A galaxy 12 million light years from Earth that is undergoing a burst of star formation.

Su	Mo	Tu	We	Th	Fr	Sa	
	01	02	03	04	05	06	
07	08	09	10	11	12	13	
JANUARY 07	14	15	16	17	18	19	20
21	22	23	24	25	26	27	
28	29	30	31				



CARTWHEEL GALAXY

A ring galaxy 400 million light years from Earth.

Su	Mo	Tu	We	Th	Fr	Sa	
				01	02	03	
04	05	06	07	08	09	10	
FEBRUARY 07	11	12	13	14	15	16	17
	18	19	20	21	22	23	24
	25	26	27	28			



NGC 4696

A large elliptical galaxy in the Centaurus Galaxy Cluster, about 150 million light years from Earth.

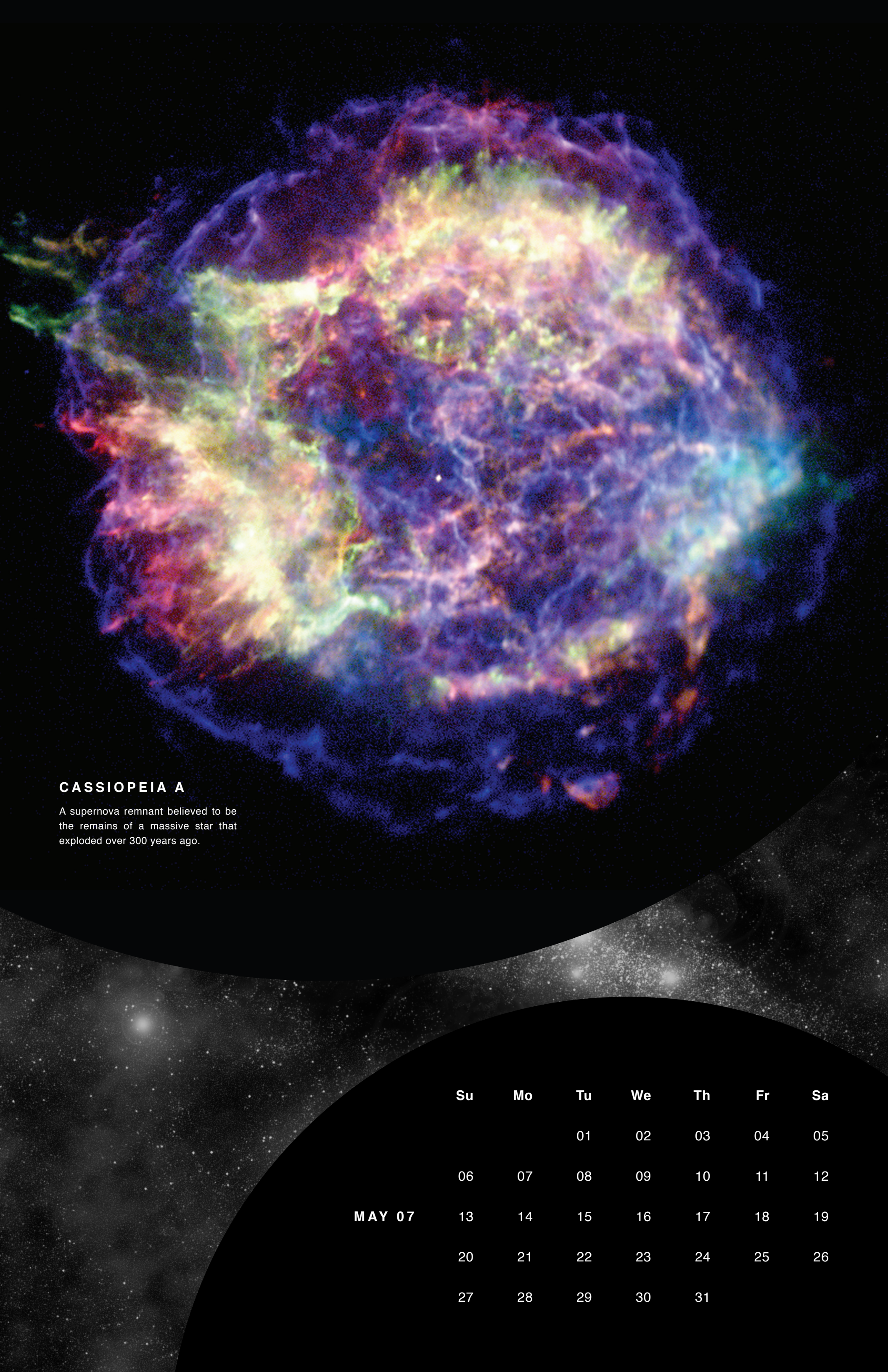
Su	Mo	Tu	We	Th	Fr	Sa	
				01	02	03	
04	05	06	07	08	09	10	
MARCH 07	11	12	13	14	15	16	17
18	19	20	21	22	23	24	
25	26	27	28	29	30	31	



J0617 in IC 443

A neutron star located in a supernova remnant about 5,000 light years away.

Su	Mo	Tu	We	Th	Fr	Sa	
01	02	03	04	05	06	07	
08	09	10	11	12	13	14	
APRIL 07	15	16	17	18	19	20	21
22	23	24	25	26	27	28	
29	30						



CASSIOPEIA A

A supernova remnant believed to be the remains of a massive star that exploded over 300 years ago.

Su	Mo	Tu	We	Th	Fr	Sa
		01	02	03	04	05
06	07	08	09	10	11	12
MAY 07	14	15	16	17	18	19
20	21	22	23	24	25	26
27	28	29	30	31		



W3 MAIN

A region of massive star formation about 6,000 light years from Earth in the Perseus arm of the Milky Way.

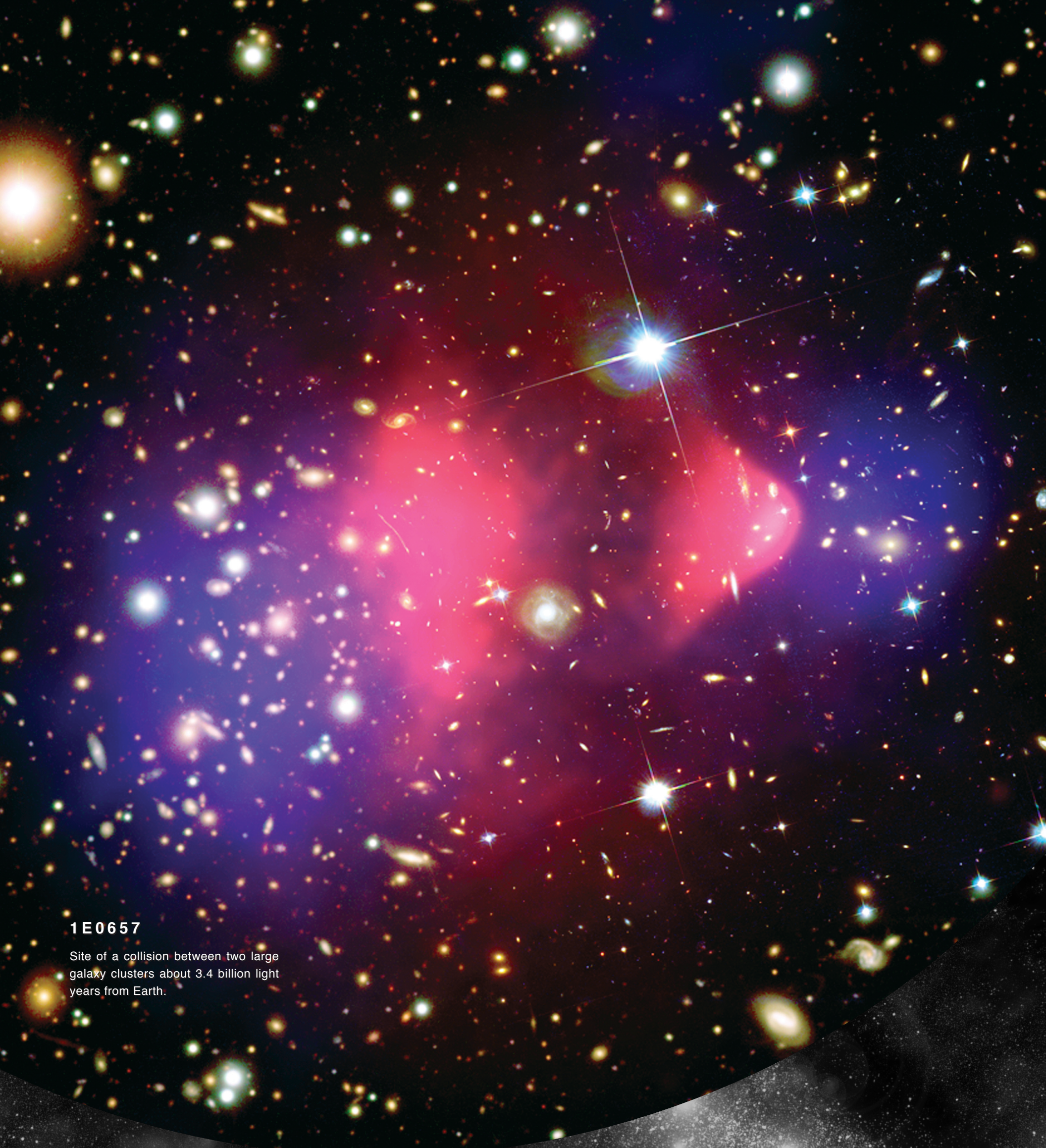
Su	Mo	Tu	We	Th	Fr	Sa	
					01	02	
03	04	05	06	07	08	09	
JUNE 07	10	11	12	13	14	15	16
17	18	19	20	21	22	23	
24	25	26	27	28	29	30	



Mz 3

Also known as the Ant Nebula, this newly formed planetary nebula is 3,000 light years away.

Su	Mo	Tu	We	Th	Fr	Sa
01	02	03	04	05	06	07
08	09	10	11	12	13	14
JULY 07	16	17	18	19	20	21
22	23	24	25	26	27	28
29	30	31				



1 E 0 6 5 7

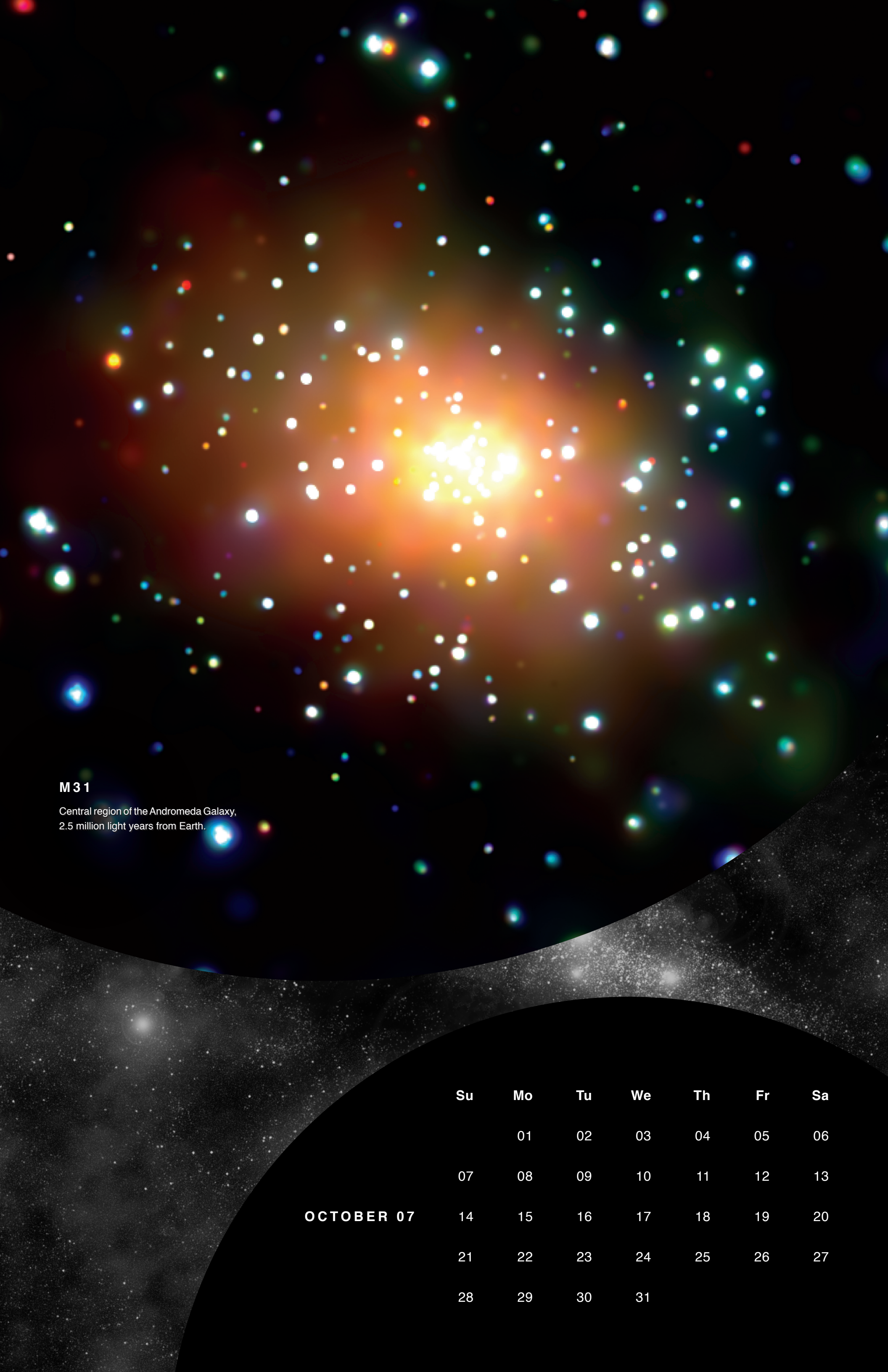
Site of a collision between two large galaxy clusters about 3.4 billion light years from Earth.

Su	Mo	Tu	We	Th	Fr	Sa	
			01	02	03	04	
05	06	07	08	09	10	11	
AUGUST 07	12	13	14	15	16	17	18
19	20	21	22	23	24	25	
26	27	28	29	30	31		

M 87

An elliptical galaxy known in the Virgo cluster about 50 million light years away.

Su	Mo	Tu	We	Th	Fr	Sa
						01
02	03	04	05	06	07	08
SEPTEMBER 07	09	10	11	12	13	14
15	16	17	18	19	20	21
22	23/30	24	25	26	27	28
29						



M 3 1

Central region of the Andromeda Galaxy,
2.5 million light years from Earth.

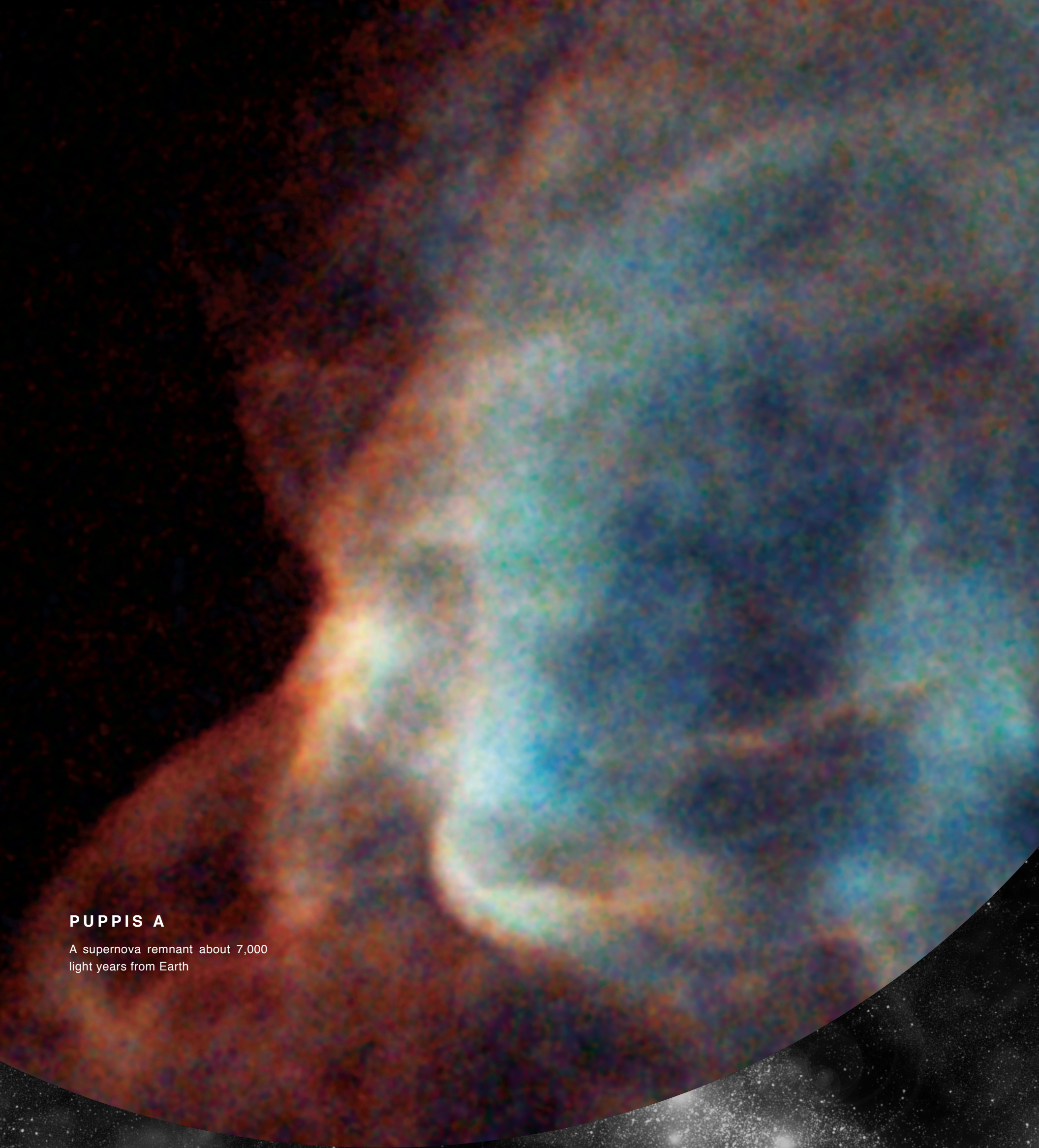
Su	Mo	Tu	We	Th	Fr	Sa	
	01	02	03	04	05	06	
07	08	09	10	11	12	13	
OCTOBER 07	14	15	16	17	18	19	20
21	22	23	24	25	26	27	
28	29	30	31				



**ARCHES, QUINTUPLET,
AND GC STAR CLUSTERS**

Three massive star clusters near the enormous black hole at the center of the Milky Way, about 26,000 light years from Earth.

Su	Mo	Tu	We	Th	Fr	Sa	
				01	02	03	
04	05	06	07	08	09	10	
NOVEMBER 07	11	12	13	14	15	16	17
18	19	20	21	22	23	24	
25	26	27	28	29	30		



PUPPIS A

A supernova remnant about 7,000 light years from Earth



Su	Mo	Tu	We	Th	Fr	Sa	
						01	
02	03	04	05	06	07	08	
DECEMBER 07	09	10	11	12	13	14	15
16	17	18	19	20	21	22	
23/30	24/31	25	26	27	28	29	