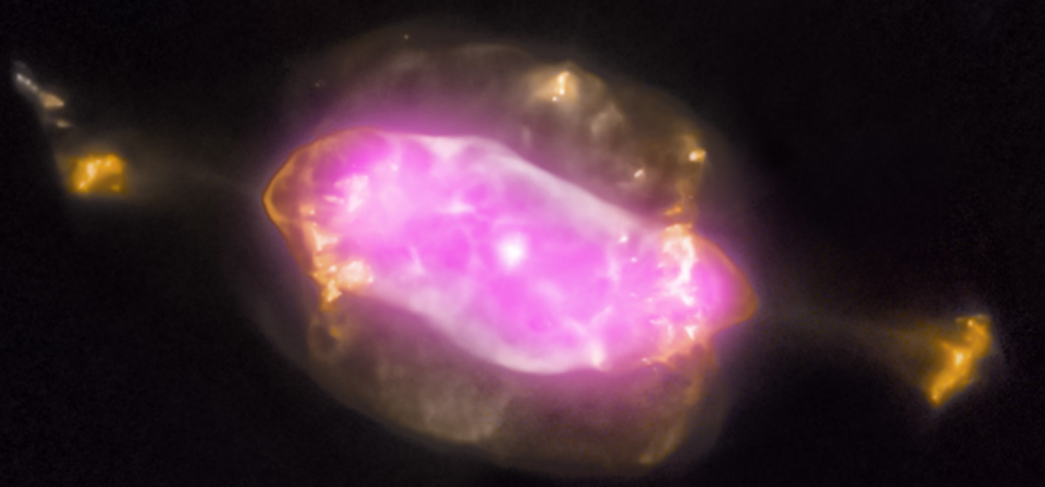




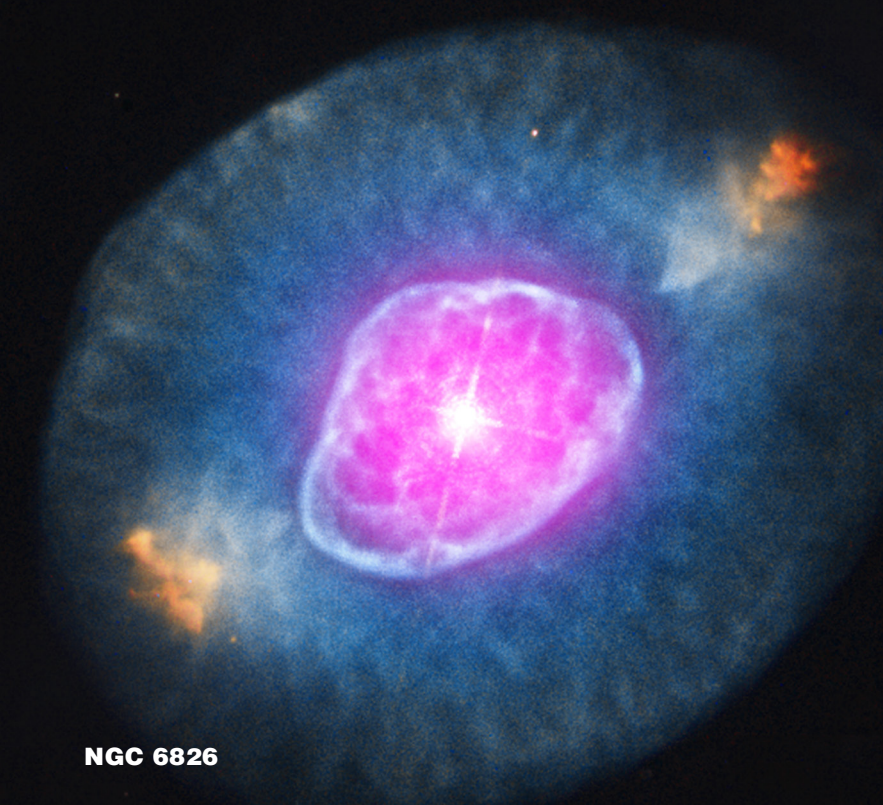
CAT'S EYE



NGC 7662



NGC 7009



NGC 6826

## Planetary Nebulas

When a star like our Sun runs out of hydrogen, it puffs off its outer layers and leaves behind a hot core. Winds from this core create a complex and graceful filamentary shell called a planetary nebula (so called because it looks like the disk of a planet when viewed with a small telescope). This panel of images shows four examples of planetary nebulas where Chandra's X-ray data (purple) have been combined with optical images from Hubble (yellow and cyan). X-ray images reveal clouds of multimillion-degree gas that have been compressed and heated by these winds.

## May 2013

S	M	T	W	Th	F	Sa
			1	2	3	4
5	6	7	8	9	10	11
12	13	14	15	16	17	18
19	20	21	22	23	24	25
26	27	28	29	30	31	